

FANNIN CO
GILMER CO

84°28'00" W

84°27'00" W

84°26'00" W

84°25'00" W

RIDGE

HORSE

CHATTAHOOCHEE

TENNESSEE

BLUE

RIDGE

DIVIDE

Mountain

Bushy Head Gap

Bart Top

Church of Chr

Burnetts

Board

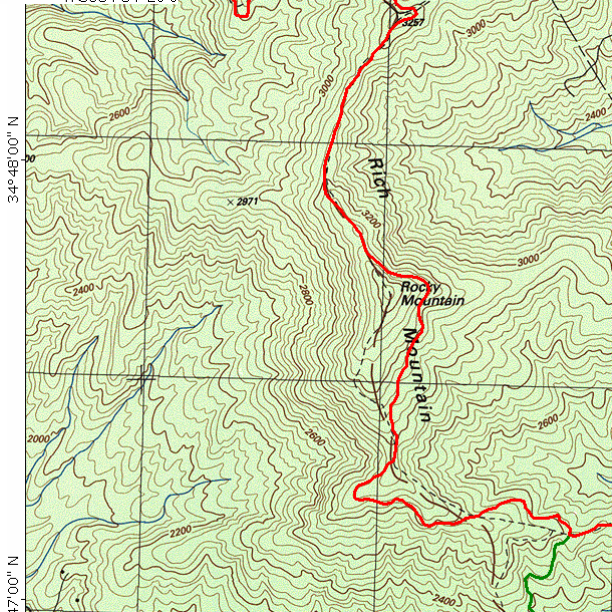
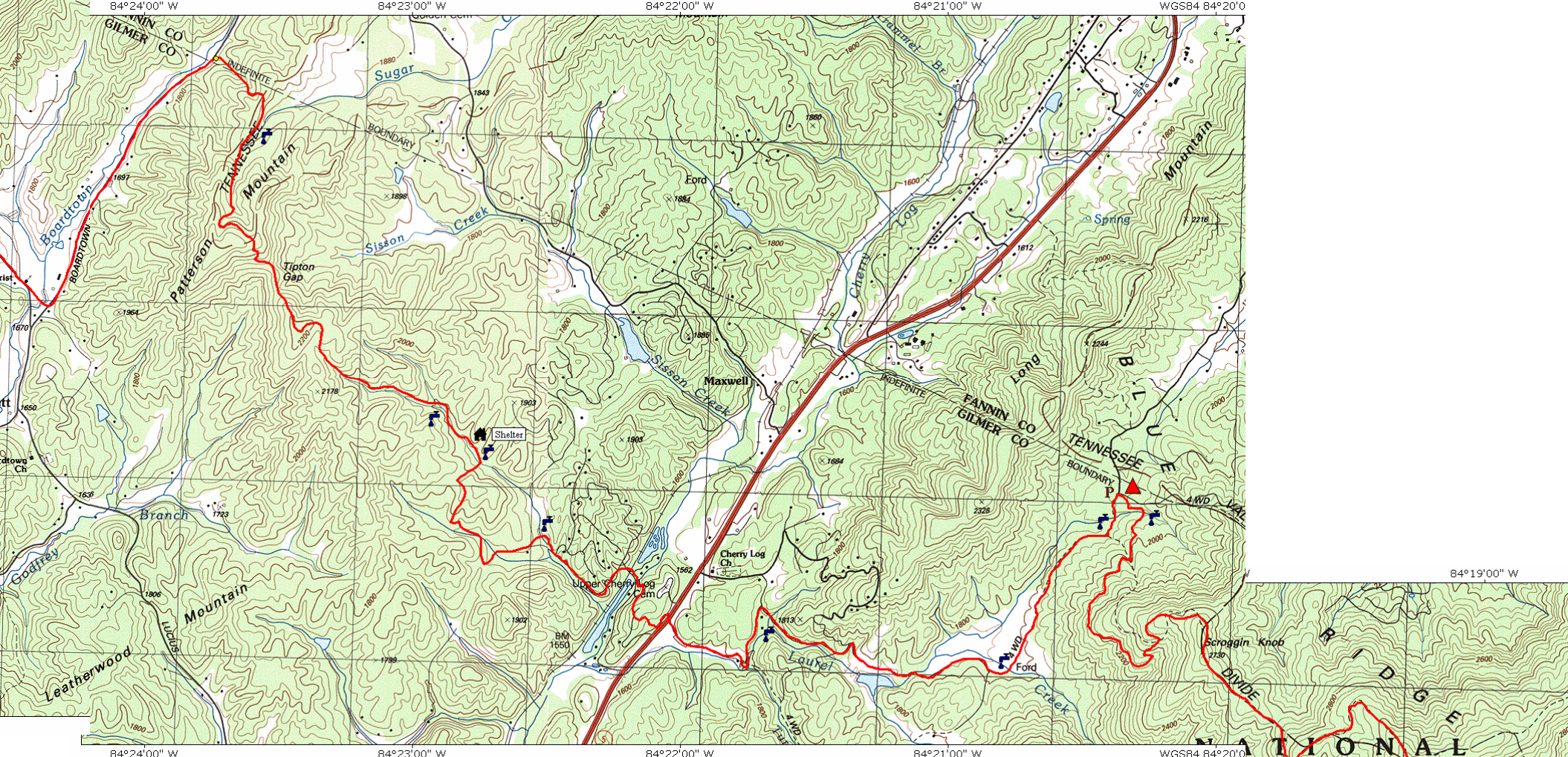
Chapman Cem

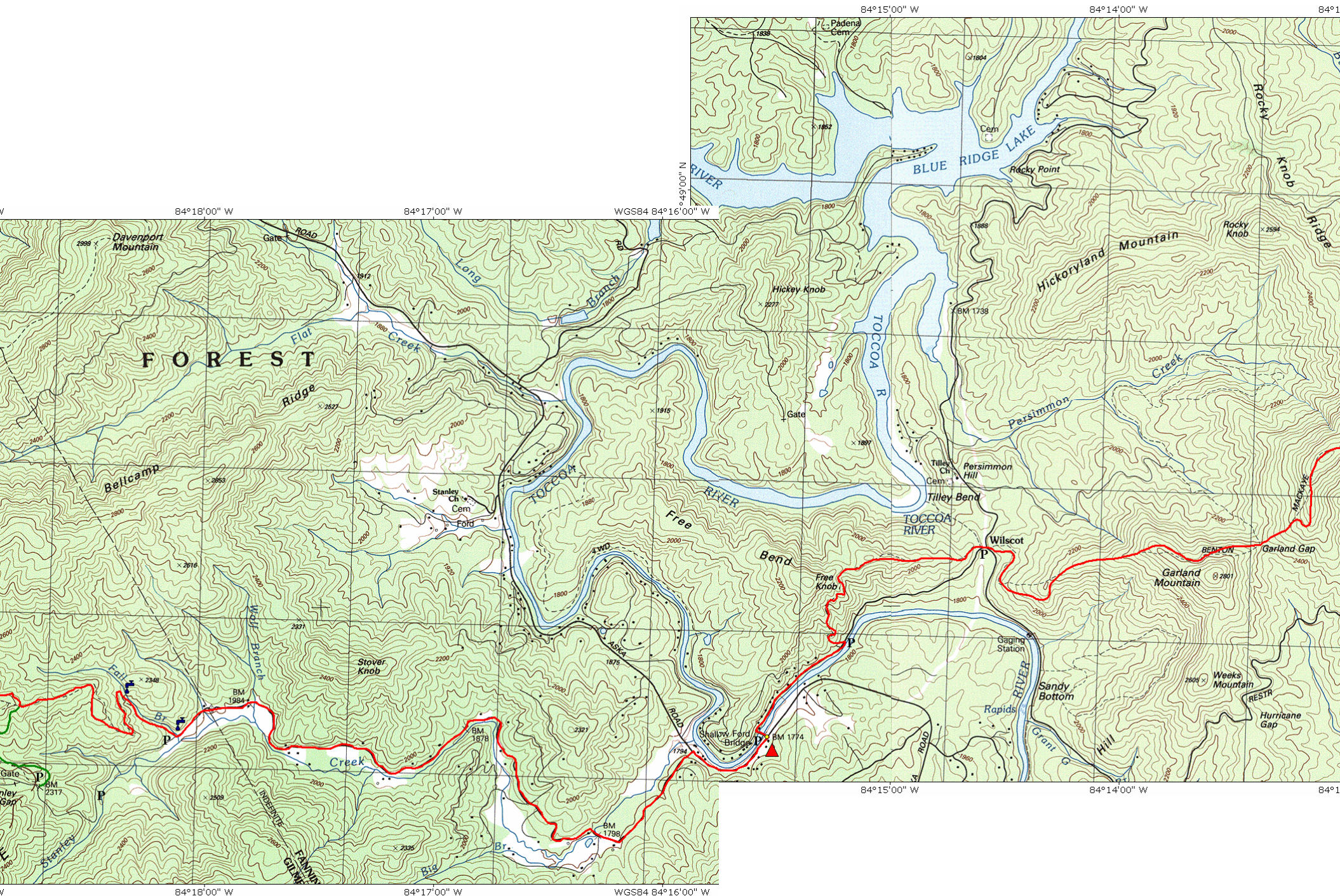
84°28'00" W

84°27'00" W

84°26'00" W

84°25'00" W







CHATTAHOOCHEE

NATIONAL FOREST

84°13'00" W 84°12'00" W 84°11'00" W

34°45'00" N

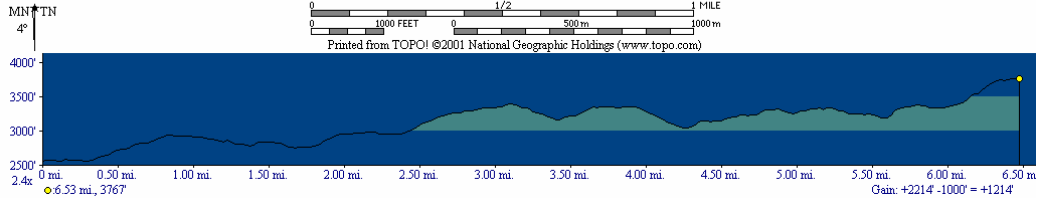
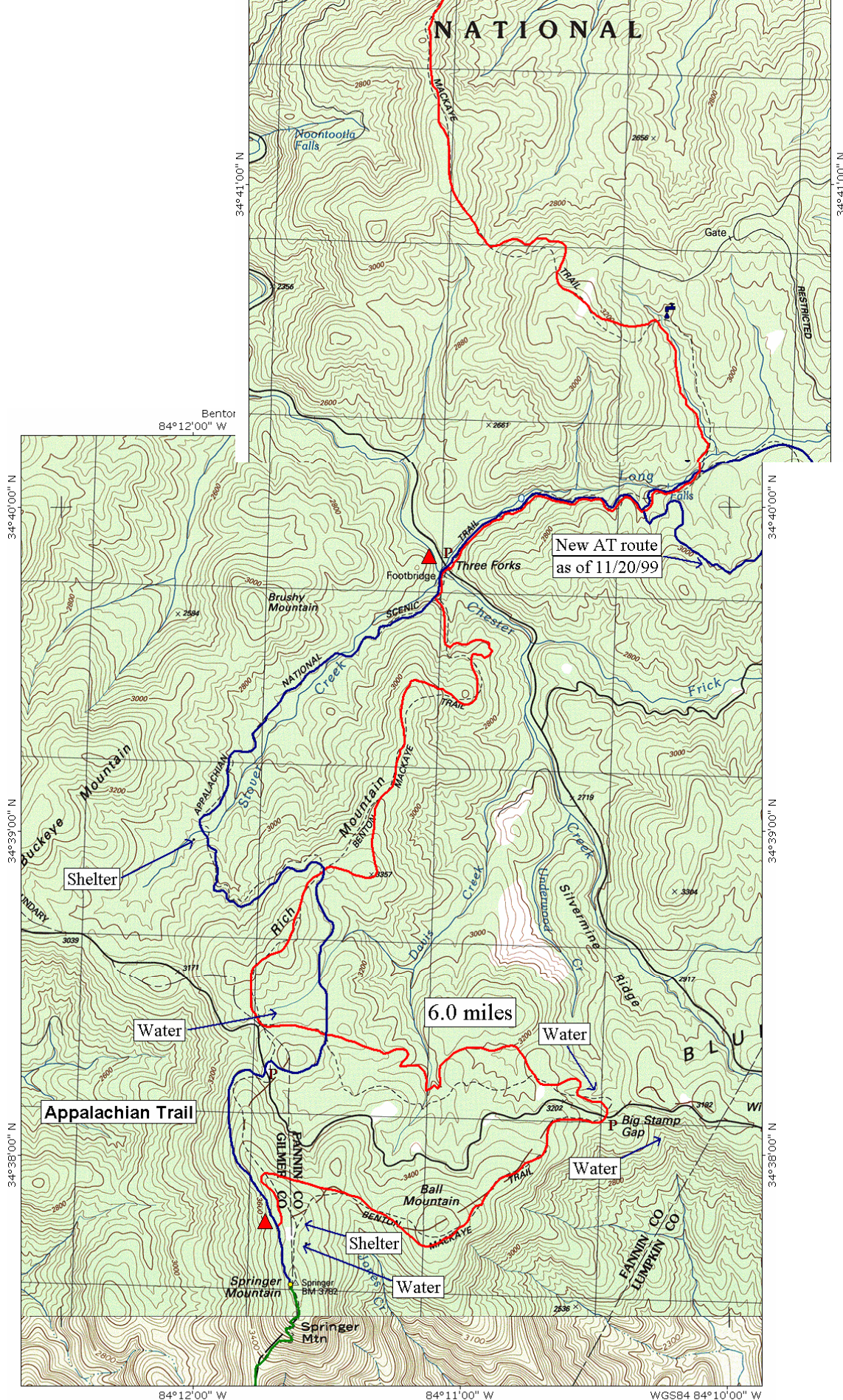
WARNING: This water downstream from livestock!

BNM 2028



Benton Mackaye Trail - Three F
84°11'00" W

NATIONAL



0 1000 FEET 0 500m 1000m
 Printed from TOPOI ©2001 National Geographic Holdings (www.topo.com)