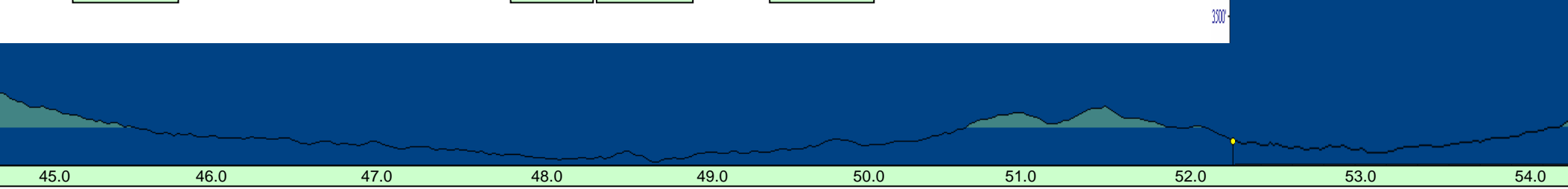
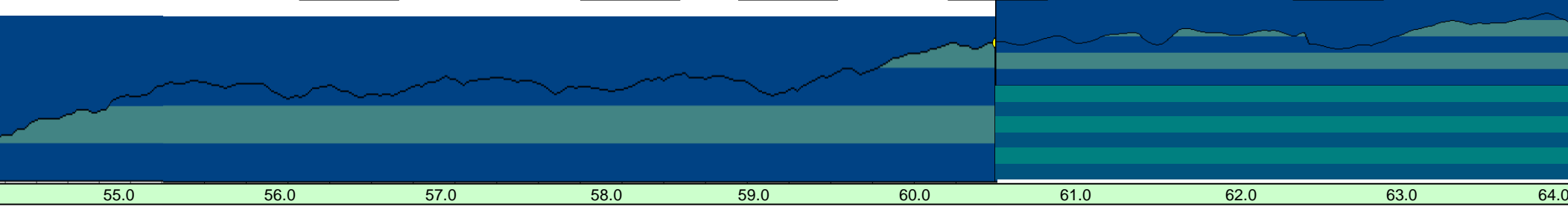


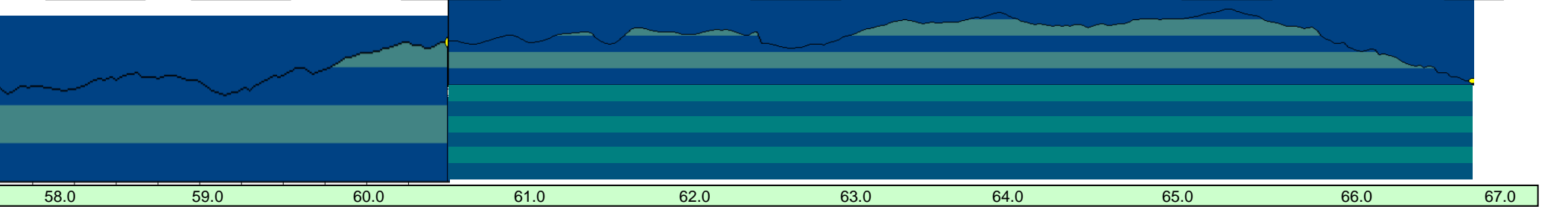
Labels for the first section: Weaver Creek Road, Laurel Creek, US HWY 76, Cherry Log Creek, Indian Rock Shelter, Tennessee Valley Divide, Boardtown Creek, Brushy Head Gap.

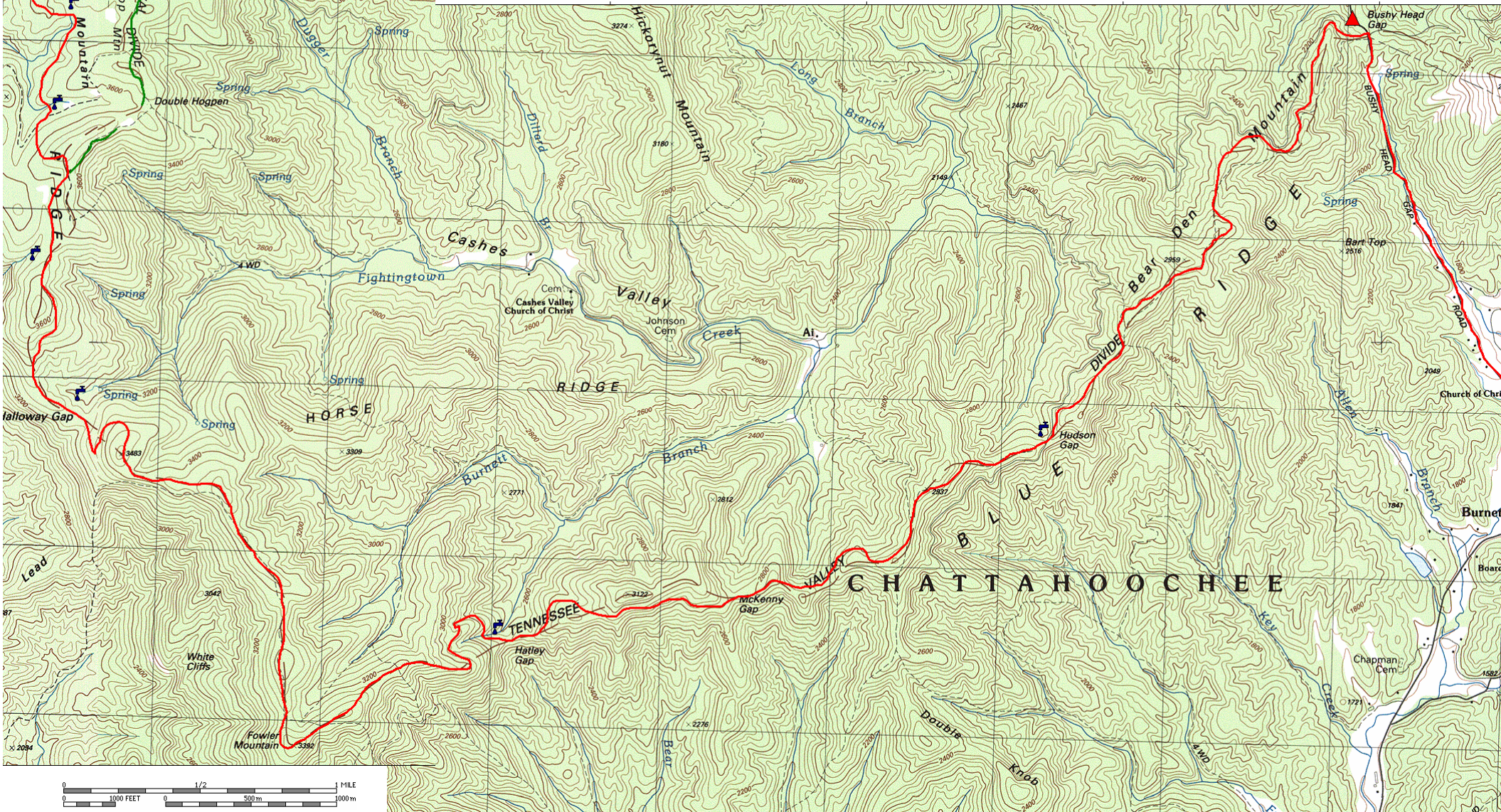
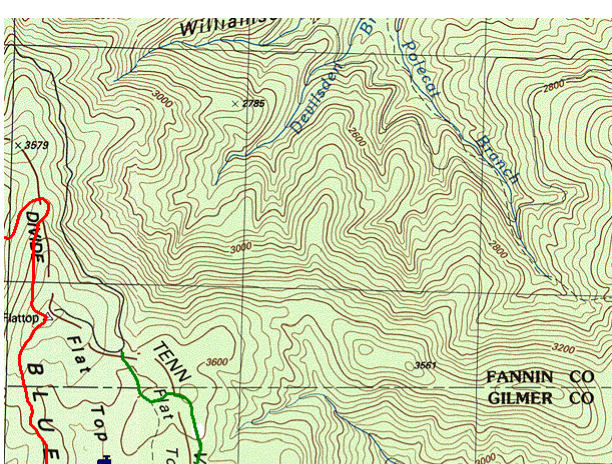


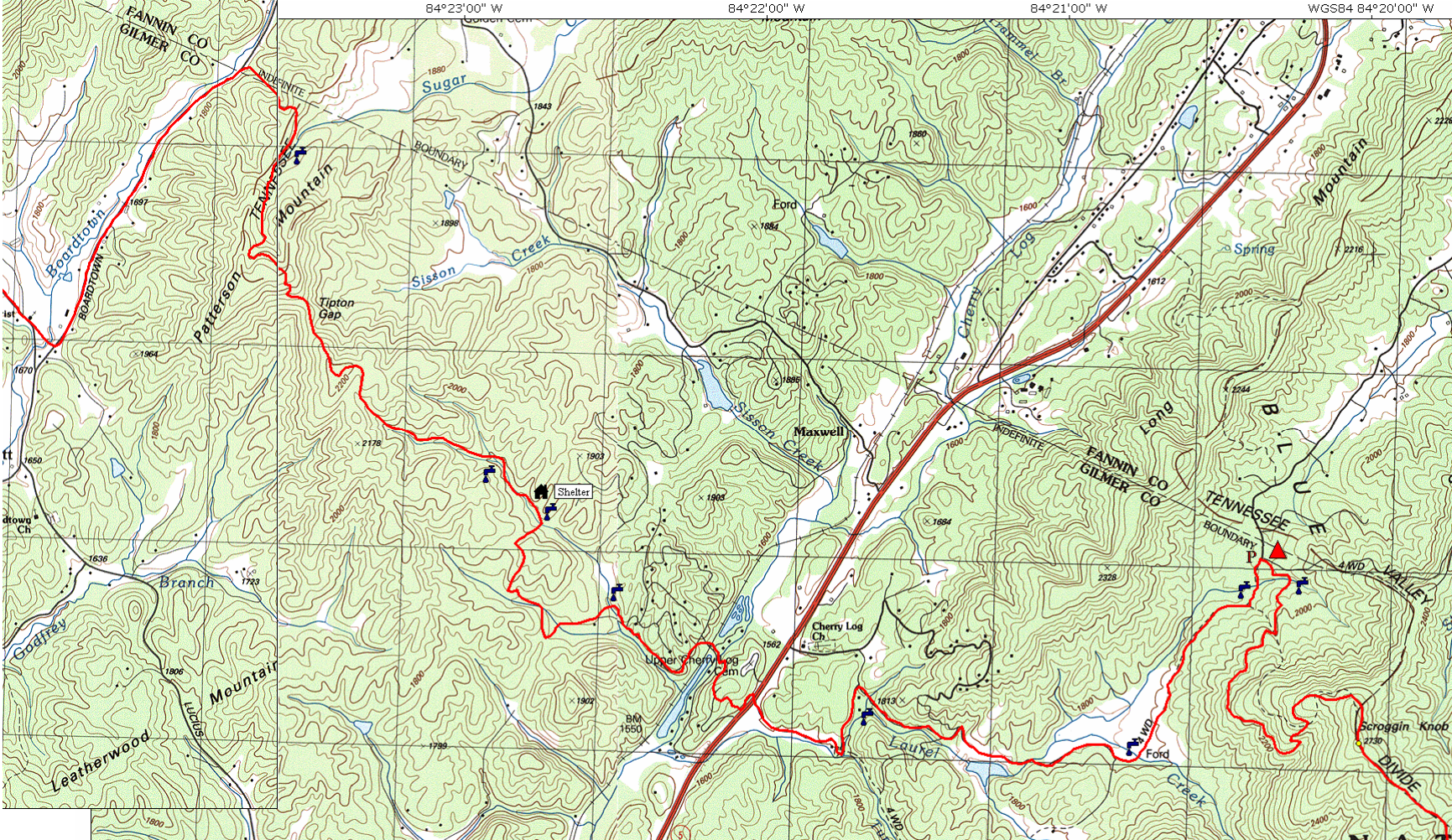
Labels for the second section: Hudson Gap, McKenny Gap, Hatley Gap, Fowler Mountain, Holloway Gap.



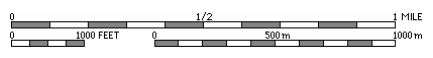
Labels for the third section: McKenny Gap, Hatley Gap, Fowler Mountain, Holloway Gap, Flat Top Mountain, Dyer Gap.

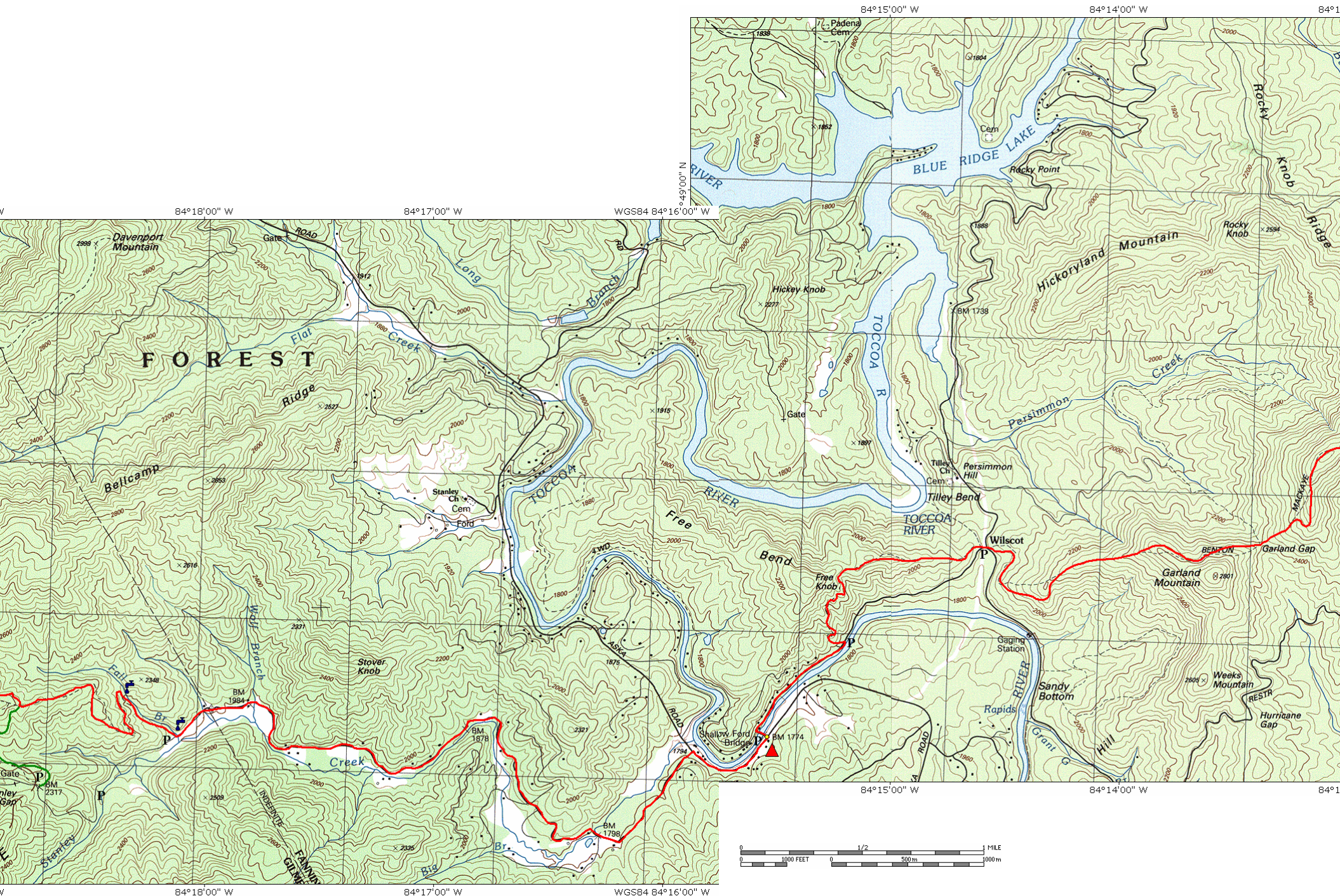


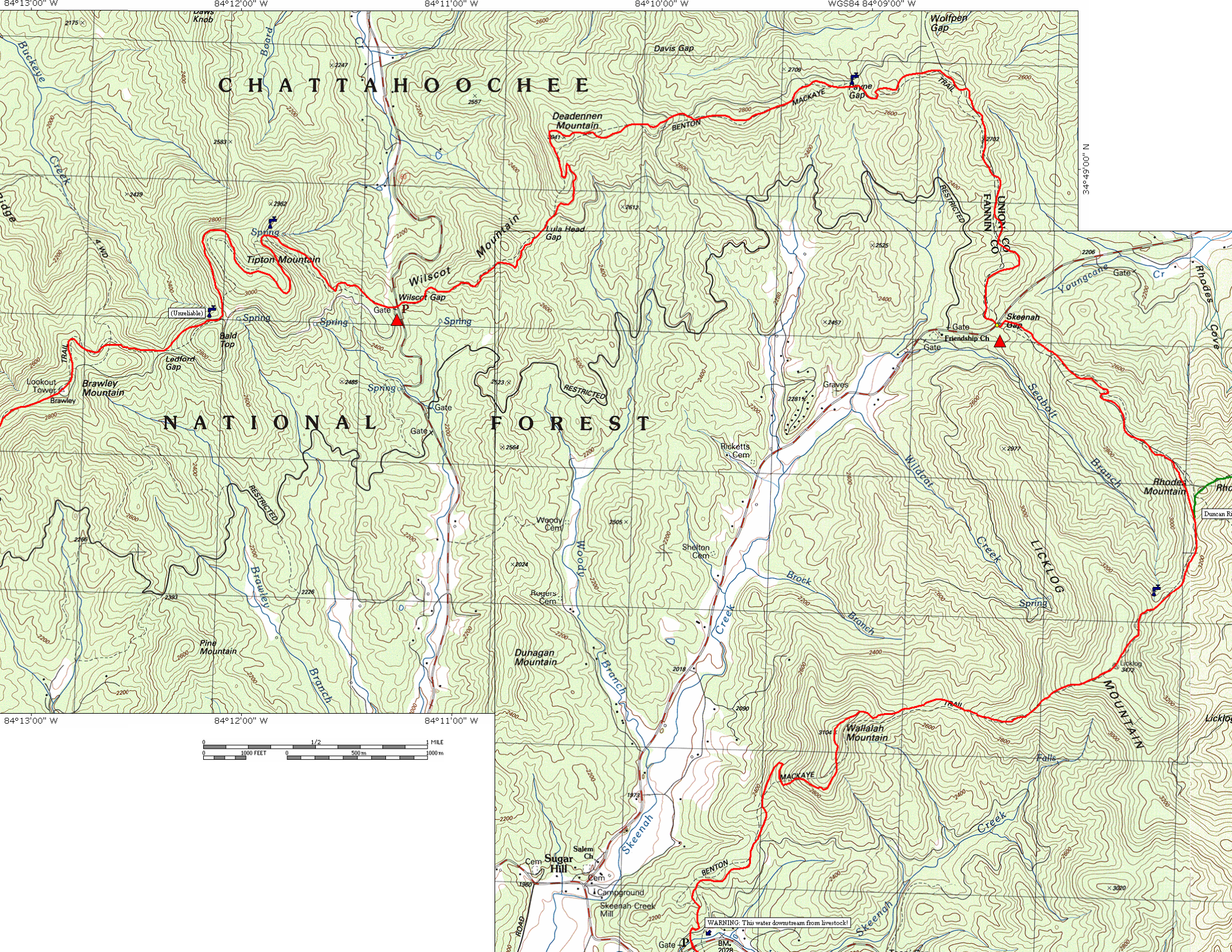




84°24'00" W 84°23'00" W 84°22'00" W 84°21'00" W







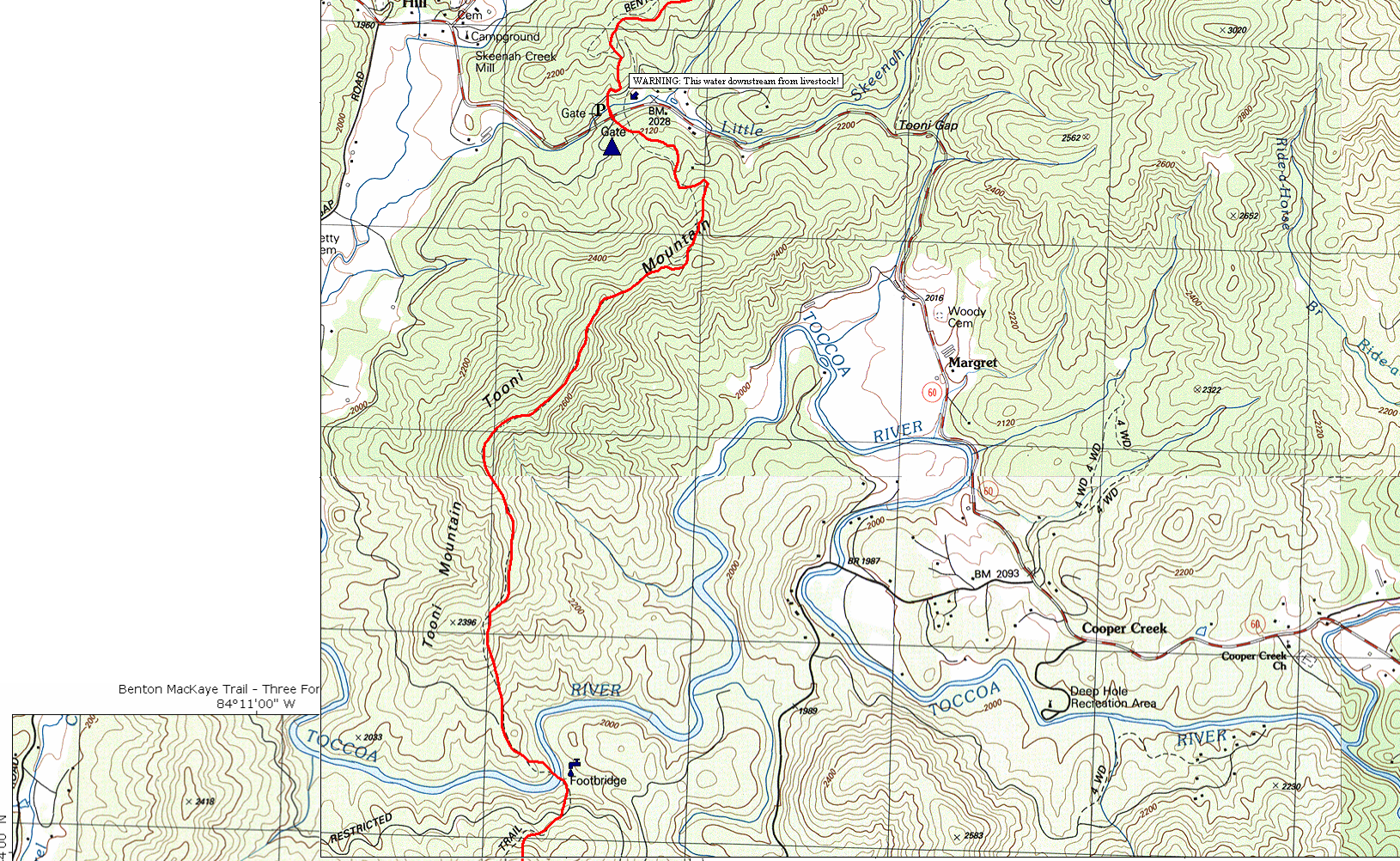
CHATTAHOOCHEE

NATIONAL FOREST

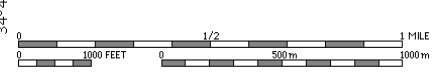
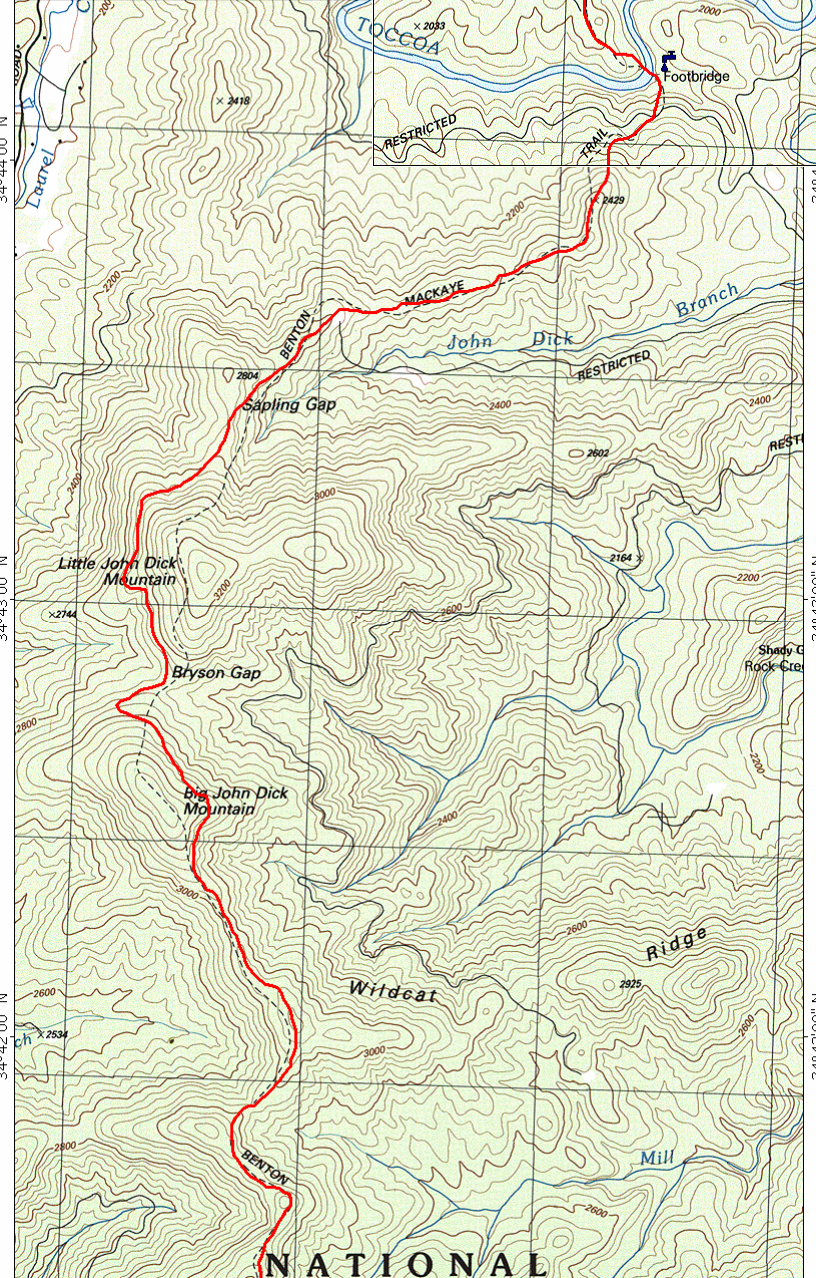


WARNING: This water downstream from livestock!

BM
2076



Benton MacKaye Trail - Three For
84°11'00" W



NATIONAL

